

MONTHLY MEMBERSHIP PROGRESS REPORT

District 325 E

Results as of: 4/30/2024

GMT:

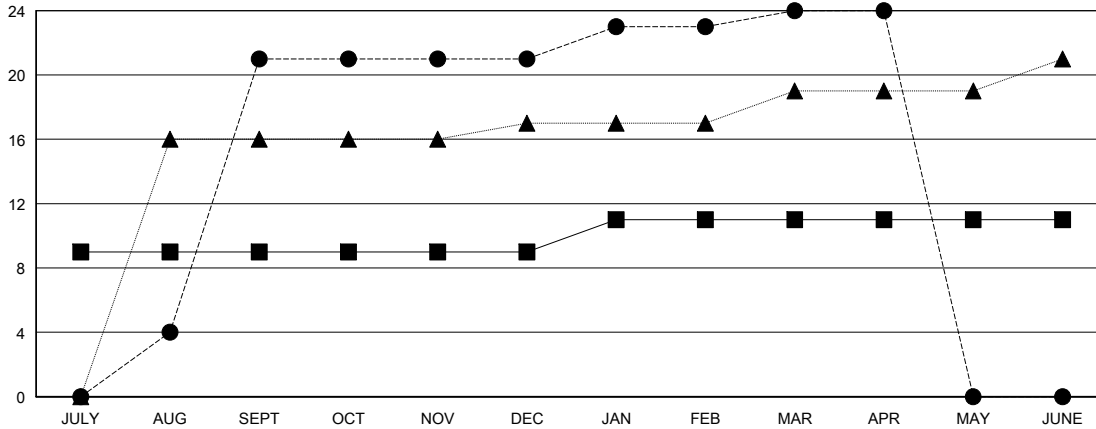
LOCATION NEPAL

GMT CA

Clubs			
RESULTS FOR 2023-2024			
QUARTER	NEW CLUB GOAL	NEW CLUBS	DROPPED CLUBS
JULY/AUG/SEPT	9	21	1
OCT/NOV/DEC	0	0	11
JAN/FEB/MAR	2	3	2
APR/MAY/JUNE	0	0	0

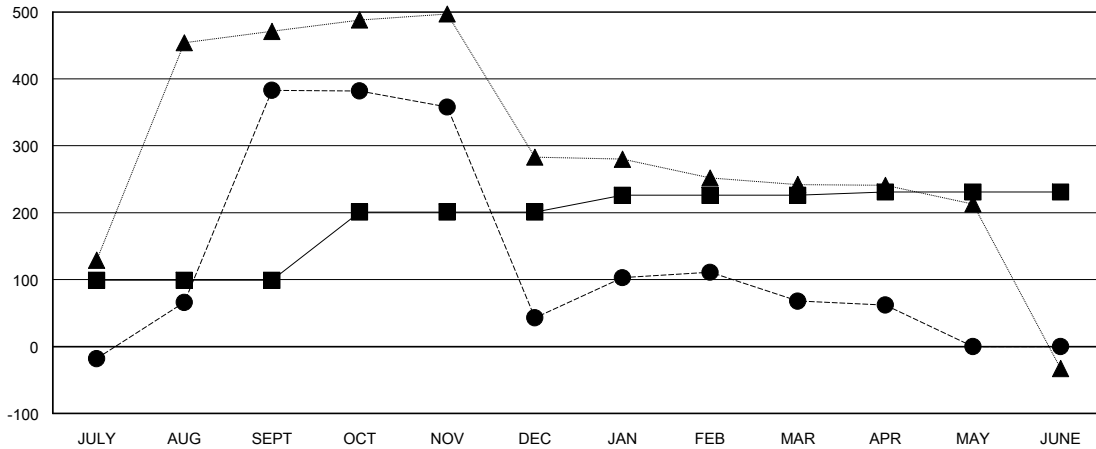
Members			
RESULTS FOR 2023-2024			
QUARTER	MEMBER GROWTH NET GOAL	MEMBER GROWTH ACTUAL	DROPPED MEMBERS ACTUAL (including transfers)
JULY/AUG/SEPT	99	508	125
OCT/NOV/DEC	102	82	422
JAN/FEB/MAR	25	151	122
APR/MAY/JUNE	5	1	7

GOALS AND ACTUAL NEW CLUBS CUMULATIVE



- - CURRENT YEAR GOALS FOR NEW CLUBS
- - CURRENT YEAR ACTUAL NEW CLUBS
- ▲ - LAST YEAR ACTUAL NEW CLUBS

GOALS AND ACTUAL MEMBERS CUMULATIVE



- - MEMBER GROWTH NET GOAL
- - MEMBER GROWTH ACTUAL
- ▲ - LAST YEAR MEMBERSHIP ACTUAL

DROPPED CLUBS: 14	
DROPPED MEMBERS	
DECEASED	2
CLUB CANCELLED	346
OTHER	328
TOTAL	676

75 CLUBS OF 125 ADDED 1 OR MORE NEW MEMBERS

GENDER DISTRIBUTION	
MALE	1,434 (65.36%)
FEMALE	760 (34.64%)

[CLICK HERE FOR CUMULATIVE MEMBERSHIP DATA](#)

TOTAL FAMILY UNIT MEMBERS	1,263
FAMILY MEMBERS PAYING HALF DUES	821